



SLE 22-026 Electrical Equipment Sale



HPS Sentinel™ G
Energy Efficient Distribution Transformer
Transformateur de Distribution à Bon Rendement Énergétique

Hyderabad, IN Guelph, ON Baraboo, WI Monterrey, MX

Part No. **SG3N0025LE0CB**

Serial No. **CB01193943**

VOLTS	CURRENT COURANT	% RATED VOLTAGE % TENSION NOMINALE	CONNECTION EACH PHASE CONNEXION PAR PHASE
504	49.6	105	H1, H4
492	50.8	102.5	H1, H4
480	52.1	100	H1, H4
468	53.4	97.5	H1, H4
456	54.8	95	H1, H4
444	56.3	92.5	H1, H4
432	57.9	90	H1, H4
252	99.2	105	H1&H3, H2&H4
240	104.2	100	H1&H3, H2&H4
228	109.6	95	H1&H3, H2&H4
216	116	90	H1&H3, H2&H4

Cust. Ref. / Ref. du Client	Serial No. / No. de Serie	HV/HT	240X480V 104.2X52.1A
Phase	1	Type	F
Cooling / Refroidissement	ANN	Term Borne	H1 H3 H2 H4
kVA	25	LV/BT	120/240V 208/104A
Temp. Rise / Echauffement	80 °C	Term Borne	X4 X2 X3 X1
Temp Class / Classe Temp	220 °C	Energy Regulations / Règlements de Énergétique	DOE 10 CFR PART 431:2016
Winding / Enroulement	CU	CEE ACT SOR/2018 - 201	
Frequency	60		
Impedance % @ 100 °C	4.8		
Encl Type / Type De Coilage	3R		
Weight / Poids	295 lbs		

SPACINGS BETWEEN ANY VENTILATED ENCLOSURE PANEL AND ANY ADJACENT WALL SHALL BE A MINIMUM OF 3 INCHES

SEISMIC QUALIFICATIONS: OSP-0136-10/NO SURFACE 7-10 SDB-C-2.29 Zb-1 9-1.5 M218



SLE 22-026 Electrical Equipment Sale



HPS Sentinel® G
Energy Efficient Distribution Transformer
Transformateur de Distribution à Bon Rendement Énergétique

Hammond Power Solutions | **Baraboo, WI** | **Monterrey, MX**
Guelph, ONT | Compton, CA

Part No. SG3A0030KK0C

Serial No. **CB01045430**

SP Lr. 3902
UL LISTED
DRY TYPE TRANSFORMER 77UD 112213
ALSO VERIFIED IN ACCORDANCE TO ENERGY STANDARD CB02.7-18

Volts	Current	% Rated Voltage	Connection
Courant	Courant	% Tension Nominale	Chaque Phase
504	34.4	105	1
492	35.2	102.5	2
480	36.1	100	3
468	37.0	97.5	4
456	38.0	95	5
444	39.0	92.5	6
432	40.1	90	7

CONNECTION EACH PHASE CONNECTION PAR PHASE

Temp. Rise: 150 °C
Temp. Class: 220 °C
Winding: CU
Frequency: 60
Impedance %: 3.7
Cooling: ANN
kVA: 30
Type: K
Phase: 3
HV/HT: 480V
BIL: 10 kV
Term. Bornes: H1 H2 H3
LV/BT: 480Y/277V
BIL: 10 kV
Term. Bornes: XO X1 X2 X3

Energy Regulations: DOE 10 CFR PART 431.2016
Regulaciones de Energética: CEE ACT SOR/2018-201

WE LEO: 325

SEISMIC QUALIFICATIONS: IBC 2019/ASCE 7-16
SOS - = 2.0g / 2.0 = 1.0g = 1.5
D20M



Part Number:

402540K04

38KV PRI DISC BUSH 2000A

Quantity: 6



PO:326671 – 1
CELL TYPE SBM 231 – 2
QTY 12
NORTH HAVEN
VIA NEW YORK
MADE IN SWEDEN

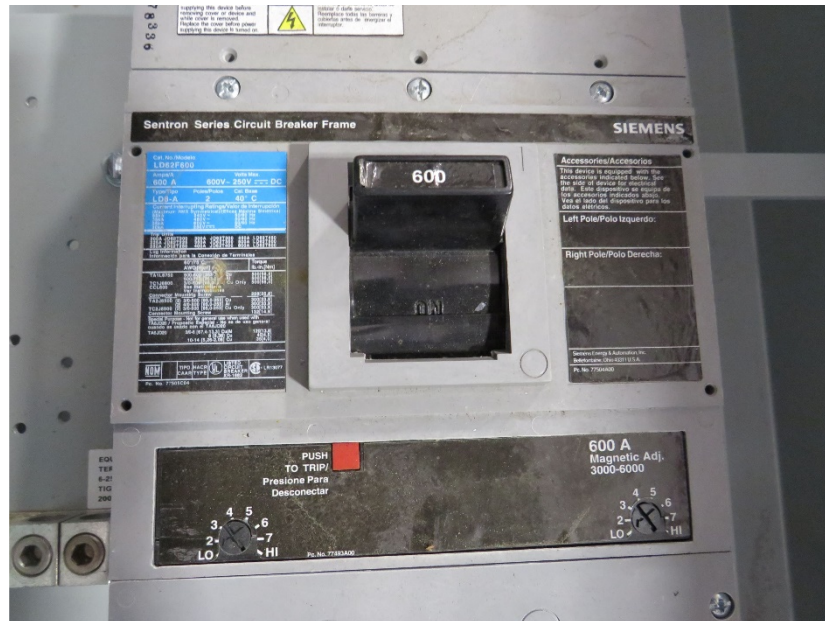
No.1
1105804 Nr. 1 / 3

PO:326671 – 1
CELL TYPE SBM 231 – 2
QTY 8
NORTH HAVEN
VIA NEW YORK
MADE IN SWEDEN

No.2
1105804 Nr. 2 / 3



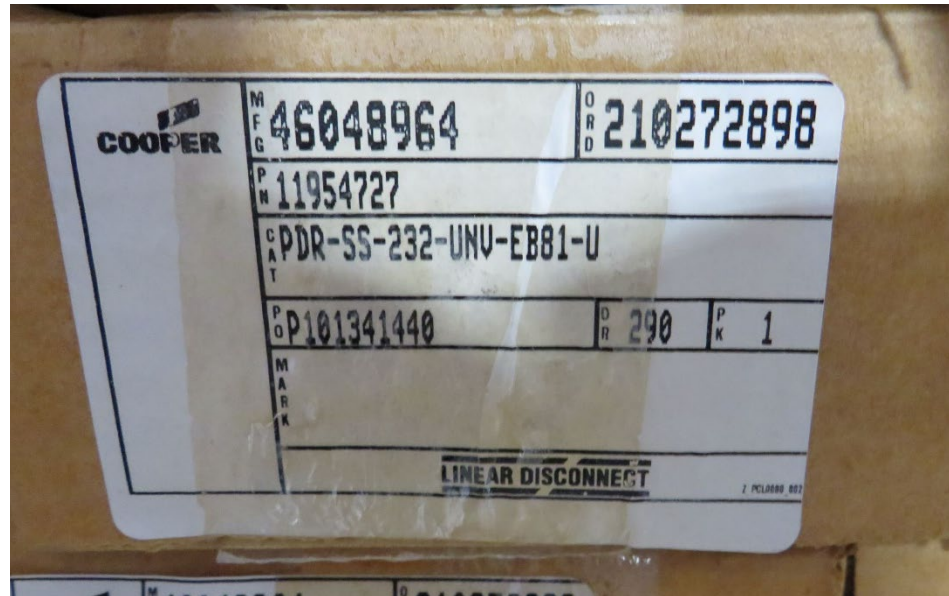
SLE 22-026 Electrical Equipment Sale





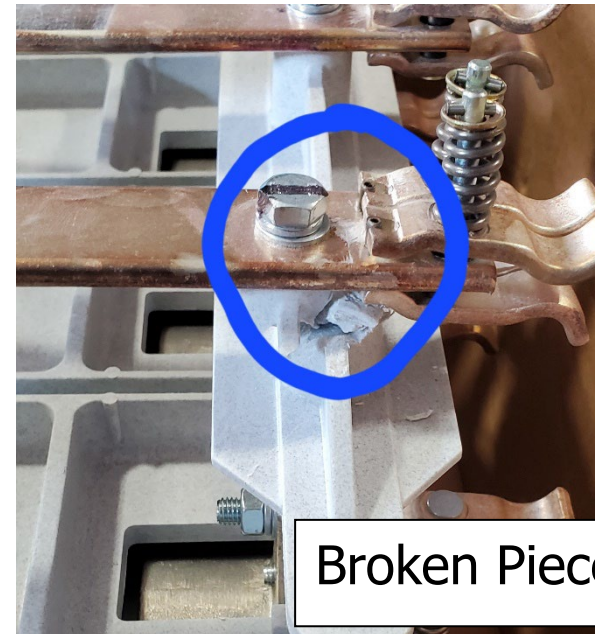


SLE 22-026 Electrical Equipment Sale





SLE 22-026 Electrical Equipment Sale





SLE 22-026 Electrical Equipment Sale





SLE 22-026 Electrical Equipment Sale





SLE 22-026 Electrical Equipment Sale





SLE 22-026 Electrical Equipment Sale

nvent
HOFFMAN

HOFFMAN CATALOG NUMBER
A48H3616SSLP

DESCRIPTION
SS NEMA TYPE 4X ENCLOSURE

RoHS
PRODUCT REVISION N/A
10/13/2021
MADE IN USA OF FOREIGN AND DOMESTIC PARTS

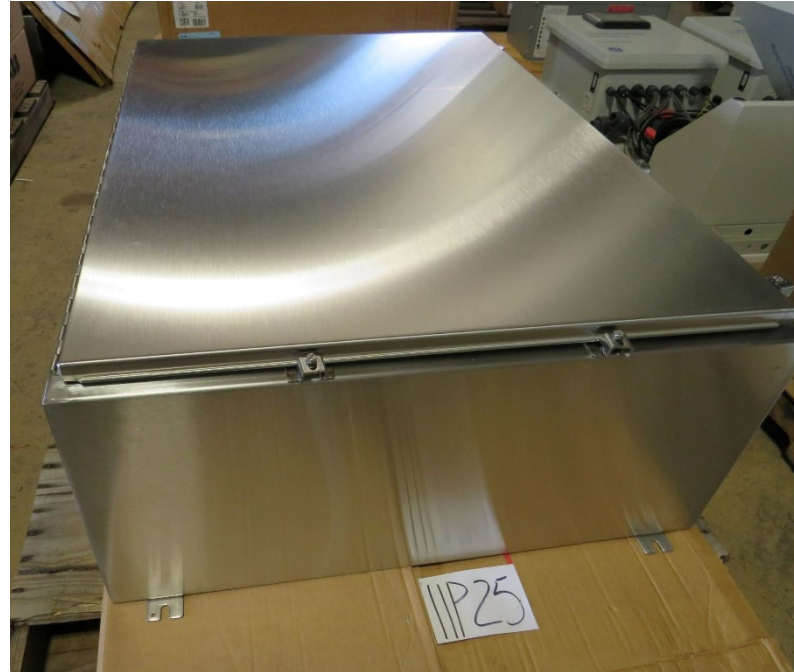
QTY 1

7 83510 23920 6

7835102392015

HOFFMAN INTERNAL
23920

7 83510 23920 6





SLE 22-026 Electrical Equipment Sale





SLE 22-026 Electrical Equipment Sale





SLE 22-026 Electrical Equipment Sale



AMETEK
SOLIDSTATE CONTROLS
875 Dearborn Dr., Columbus, Ohio 43085 U.S.A.

FOR EMERGENCY SERVICE CALL
1-800-222-9079
OUTSIDE OF U.S. AND CANADA
1-614-846-7500

15 KVA Remote Manual Bypass Switch

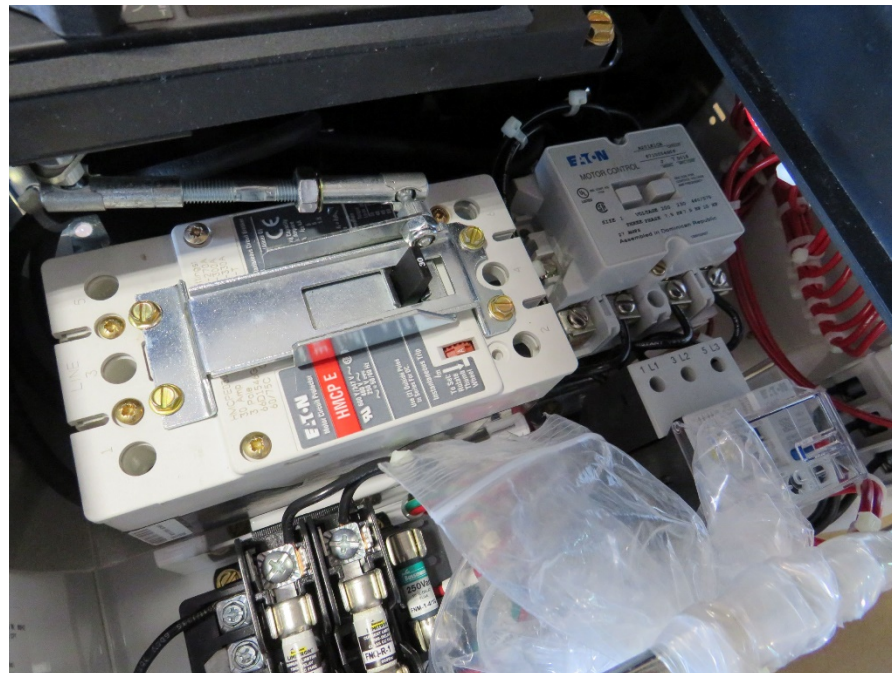
Model #	3RS150MB-20		
Part #	92000630-6-1		
Serial #	92000630-0114		
AC	120/208 VAC	42 Amps	
Input/Output	50/60 Hz	3 Phase	
		4 Wire + Gnd	
	0-40 °C Operating Temperature		
Ratings Nominal	Date of Mfr.	Sept., 2012	

Made in USA Form 02-100050 Rev. A

CAUTION:
AVOID ELECTRIC SHOCK THIS UNIT



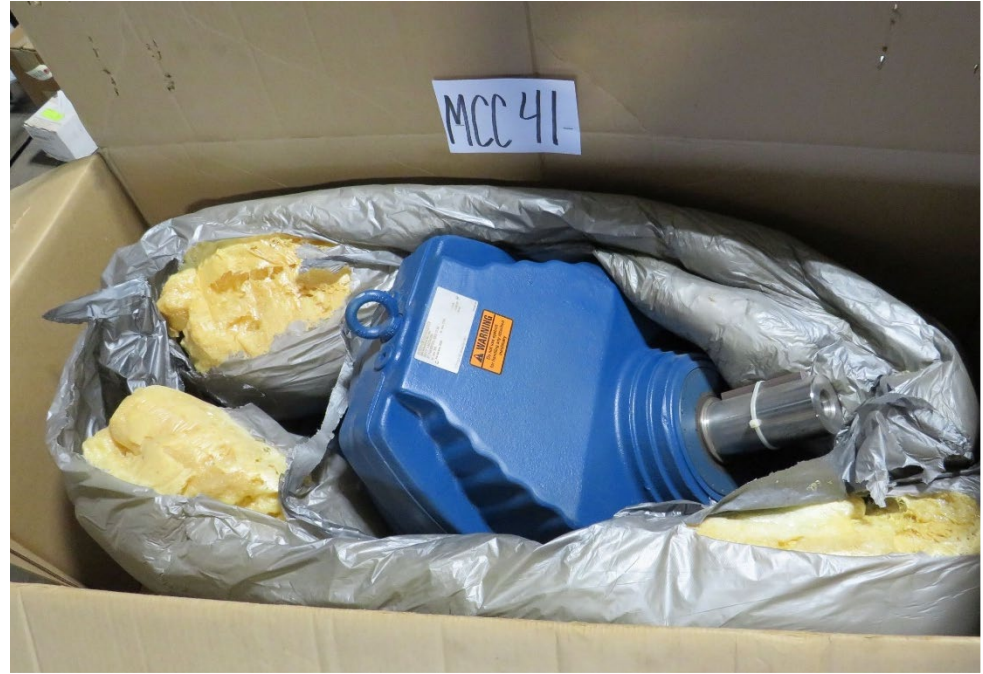
SLE 22-026 Electrical Equipment Sale







SLE 22-026 Electrical Equipment Sale





SLE 22-026 Electrical Equipment Sale

